



An ISO 9001: 2015 Certified Company

YAGI ANTENNA 18 Dbi



Technical Specifications

Model No.	YAGOD4G018
Frequency Range	698-960/1710-2700MHz
Beam Width	60±50
Polarization	Vertical
Gain	18 DBI
Lightning Protection V	Direct Ground
VSWR	<1.5:1
Maximum Input Power	100 W
Impedance	50
Connector Type	SMA M/N F/ Customized
Operating Temp	-40 to 55 C
Mounting	Clamp Type / Pole Mount
Cable Length	300 MM / Customized
Cable	RG58
Compliances	CE compliant
ROHS	ROHS Compliant

FEATURES

- Wide Frequency Range
- Light Weight
- High gain
- Easy to Install
- Vertical or Horizontal Polarization
- All-Weather Operation
- Best for Outdoor applications.

[Click Here](#)



Installation Guidance

CALL OR  **+91-8800386366**

Follow Us For More Updates **GLEAMLIGHTINDIA** /     

Info@gleamlightindia.com/www.gleamlightindia.in/gleamlightindia.com/www.gleamindia.com

12B Block -A, Behind Kanishka Garden, Amar Colony Main Rohtak Road Nangloi, New Delhi, Delhi 110041





An ISO 9001: 2015 Certified Company

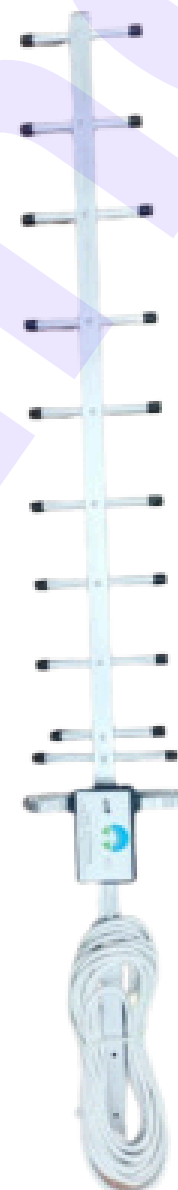
YAGI ANTENNA 18 Dbi

High Quality Aluminium Structure

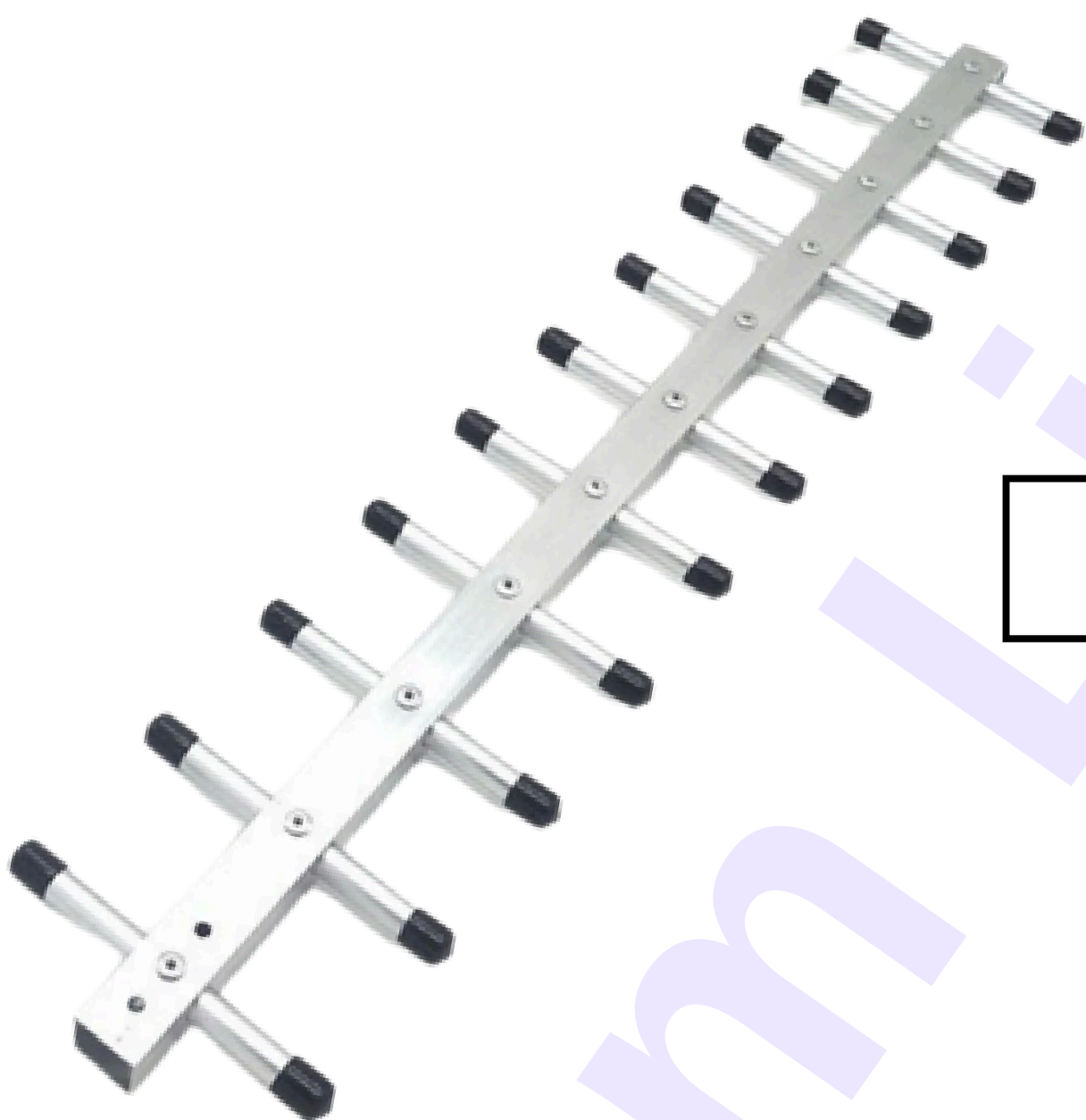


The connections between elements and other components is secure and well-constructed to minimize losses and ensure stable performance over time.

The unique design of the yagi antenna feed which works as matching device to keep the VSWR low resulting in increased efficiency of the yagi with reflector.



The antenna is also be robust and reliable, with stable performance over time and in various environmental conditions.



A GSM Yagi antenna is a useful tool for improving the reliability and coverage of GSM networks, and can be used in a variety of applications.



CALL OR **+91-8800386366**

Follow Us For More Updates **GLEAMLIGHTINDIA** /

Info@gleamlightindia.com / www.gleamlightindia.in / www.gleamindia.com

12B Block -A, Behind Kanishka Garden, Amar Colony Main Rohtak Road Nangloi, New Delhi, Delhi 110041

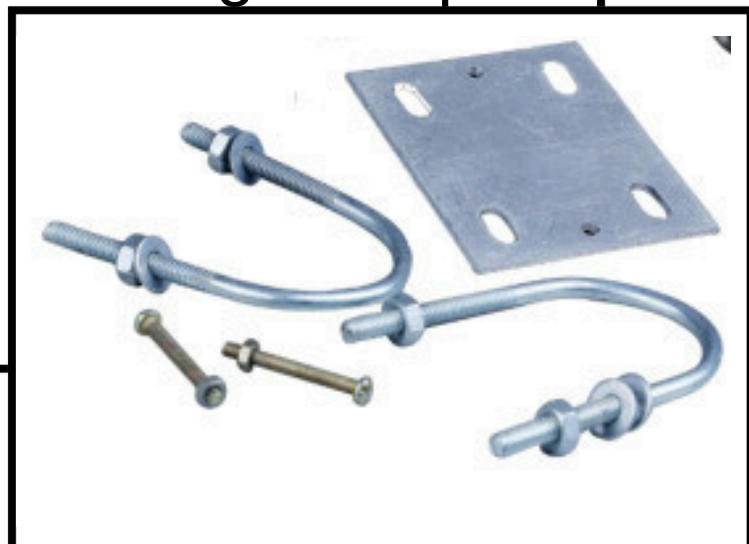




An ISO 9001: 2015 Certified Company

YAGI ANTENNA 18 Dbi

Antenna
Mounting Clamp



The clamps are designed to securely fasten the antenna to the support structure.



Cable
Rg 58

N Female



SMA M



Yagi Antenna Connector is
Customize



CALL OR  +91-8800386366

Follow Us For More Updates **GLEAMLIGHTINDIA** /     

Info@gleamlightindia.com / www.gleamlightindia.in / www.gleamindia.com

12B Block -A, Behind Kanishka Garden, Amar Colony Main Rohtak Road Nangloi, New Delhi, Delhi 110041